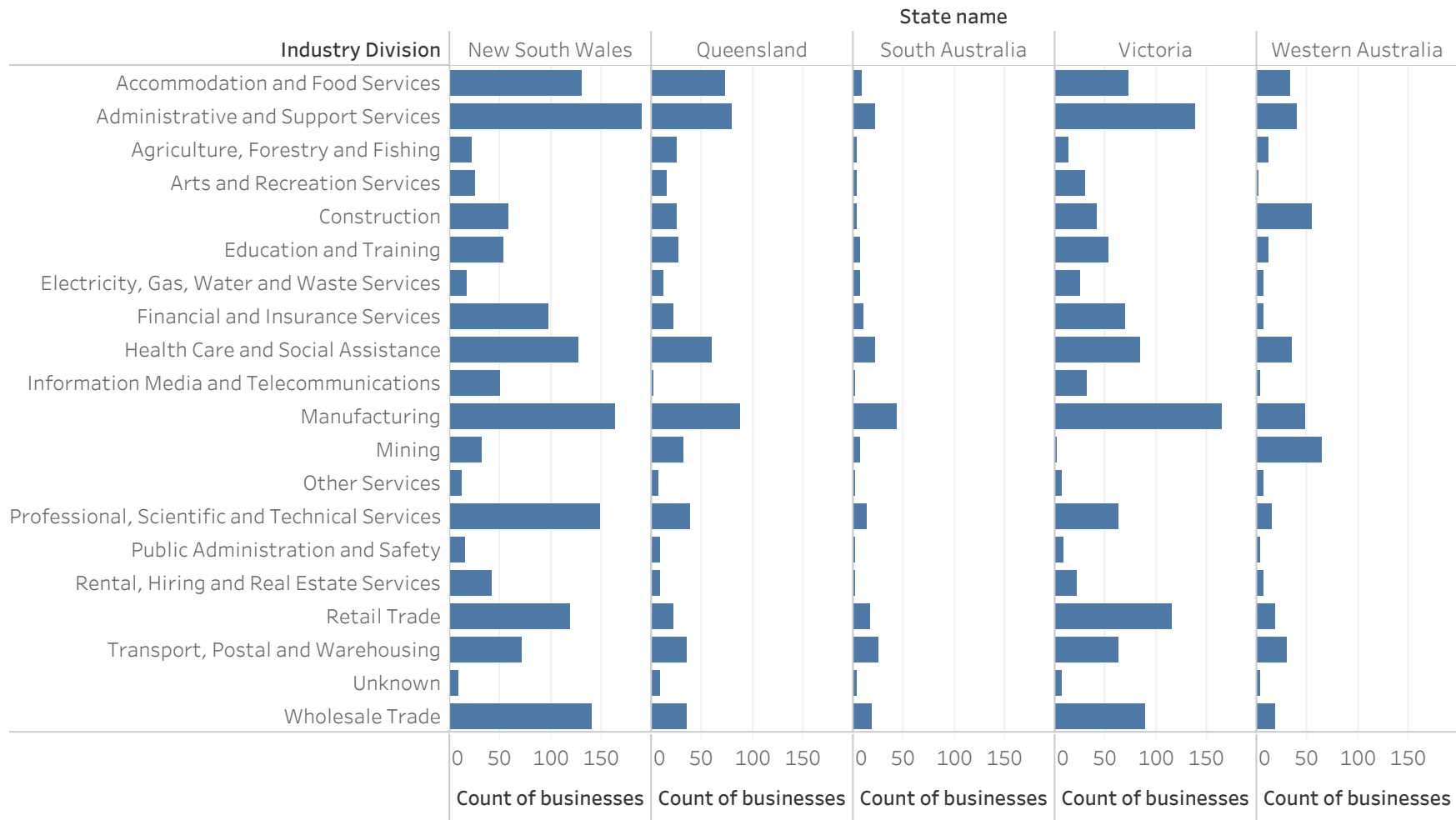
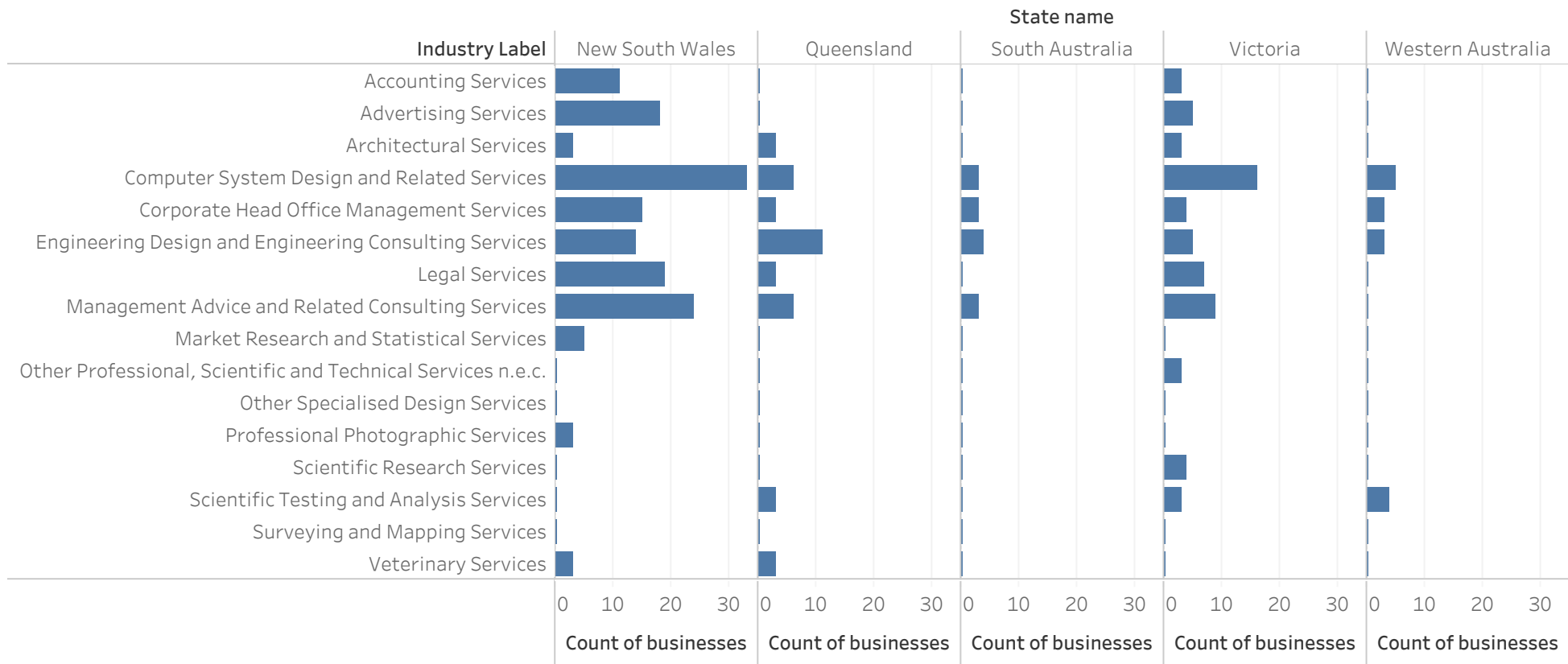


Businesses with 200+ employees, 30 June 2017



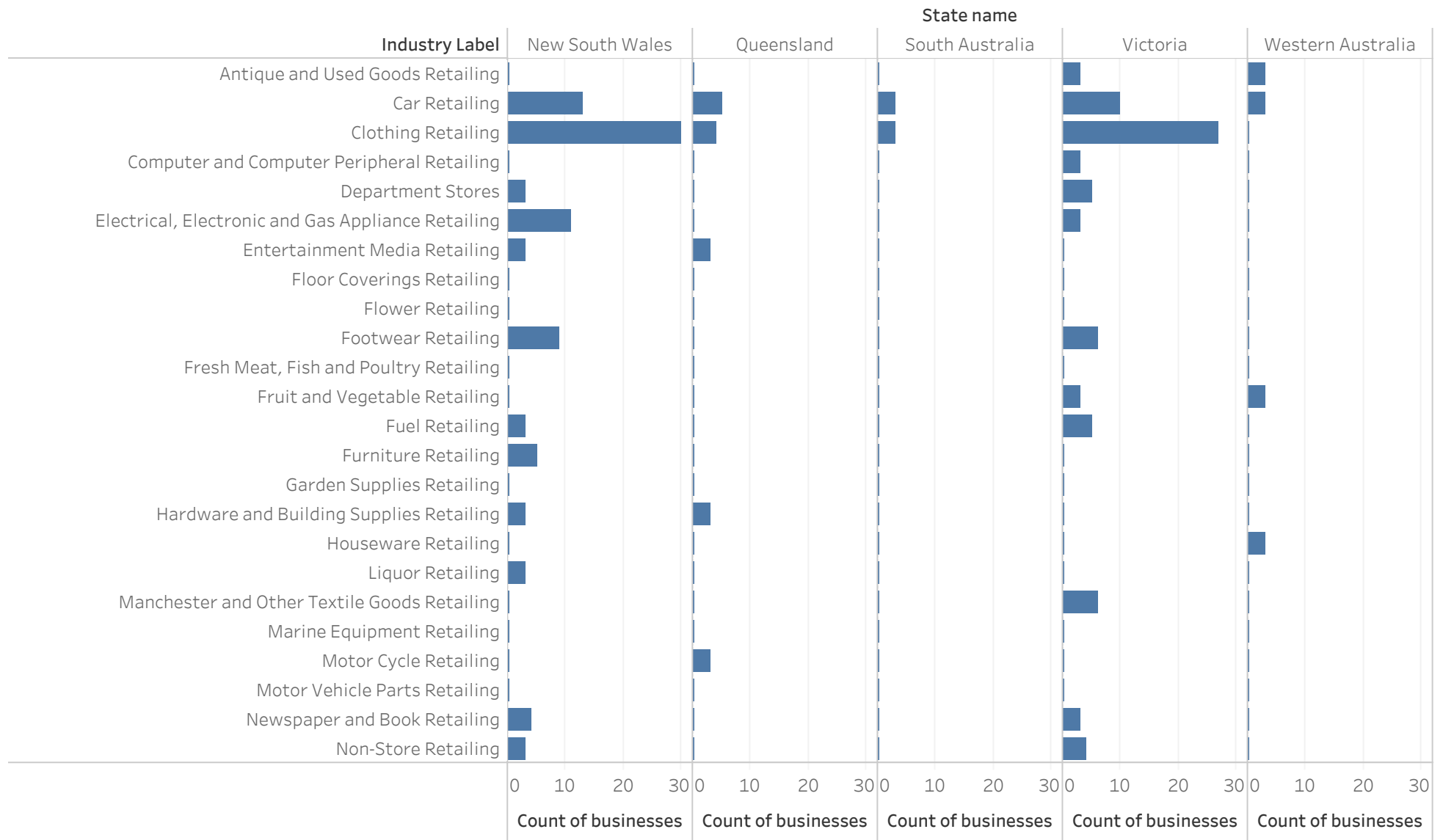
Sum of Count of businesses for each Industry Division broken down by State name. The data is filtered on Date Year and Size of business. The Date Year filter keeps 2017. The Size of business filter keeps 200+ Employees. The view is filtered on State name, which keeps New South Wales, Queensland, South Australia, Victoria and Western Australia.

Businesses with 200+ employees, 30 June 2017: Professional, Scientific & Technical Services



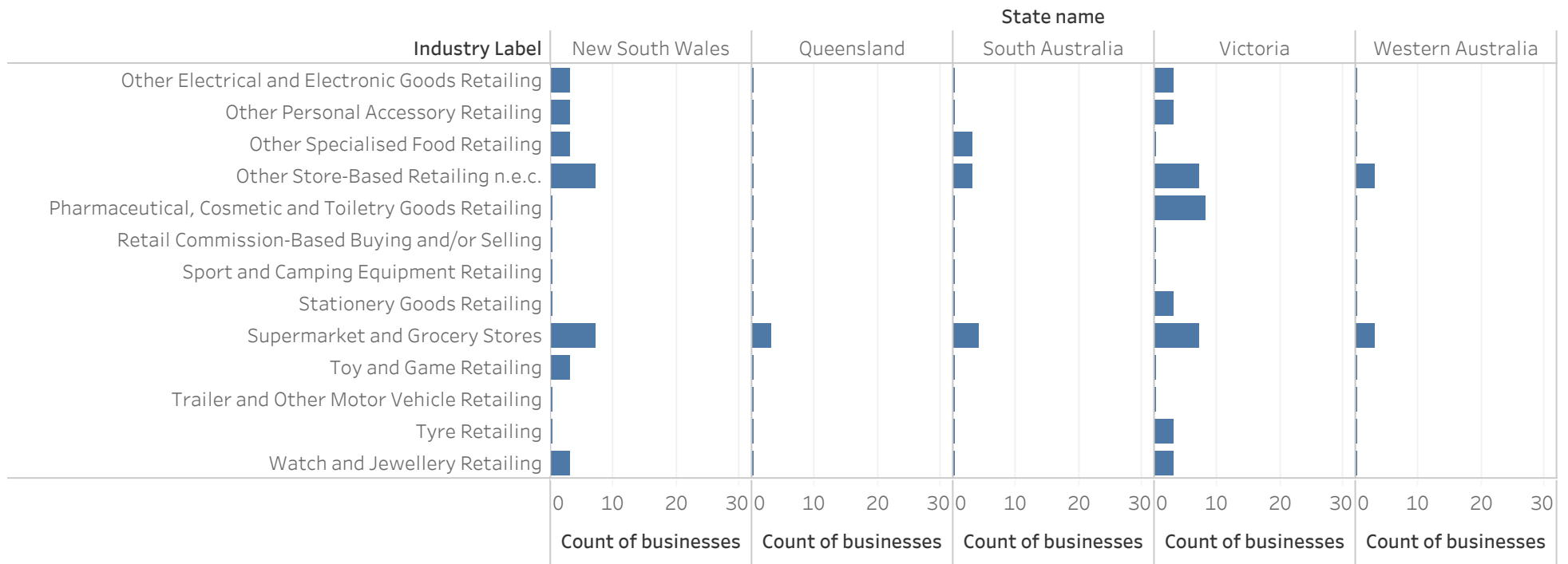
Sum of Count of businesses for each Industry Label broken down by State name. The data is filtered on Date Year, Size of business and Industry Division. The Date Year filter keeps 2017. The Size of business filter keeps 200+ Employees. The Industry Division filter keeps Professional, Scientific and Technical Services. The view is filtered on State name, which keeps New South Wales, Queensland, South Australia, Victoria and Western Australia.

Businesses with 200+ employees, 30 June 2017: Retail Trade



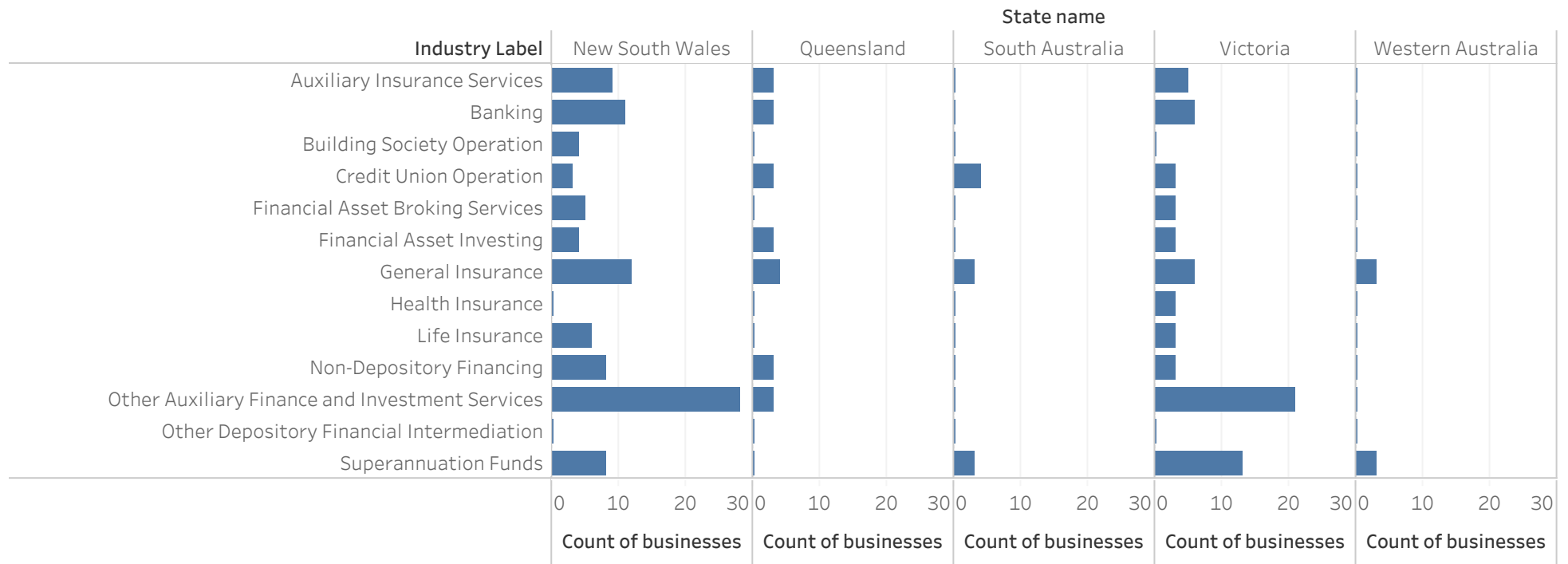
Sum of Count of businesses for each Industry Label broken down by State name. The data is filtered on Date Year, Size of business and Industry Division. The Date Year filter keeps 2017. The Size of business filter keeps 200+ Employees. The Industry Division filter keeps Retail Trade. The view is filtered on State name, which keeps New South Wales, Queensland, South Australia, Victoria and Western Australia.

Businesses with 200+ employees, 30 June 2017: Retail Trade



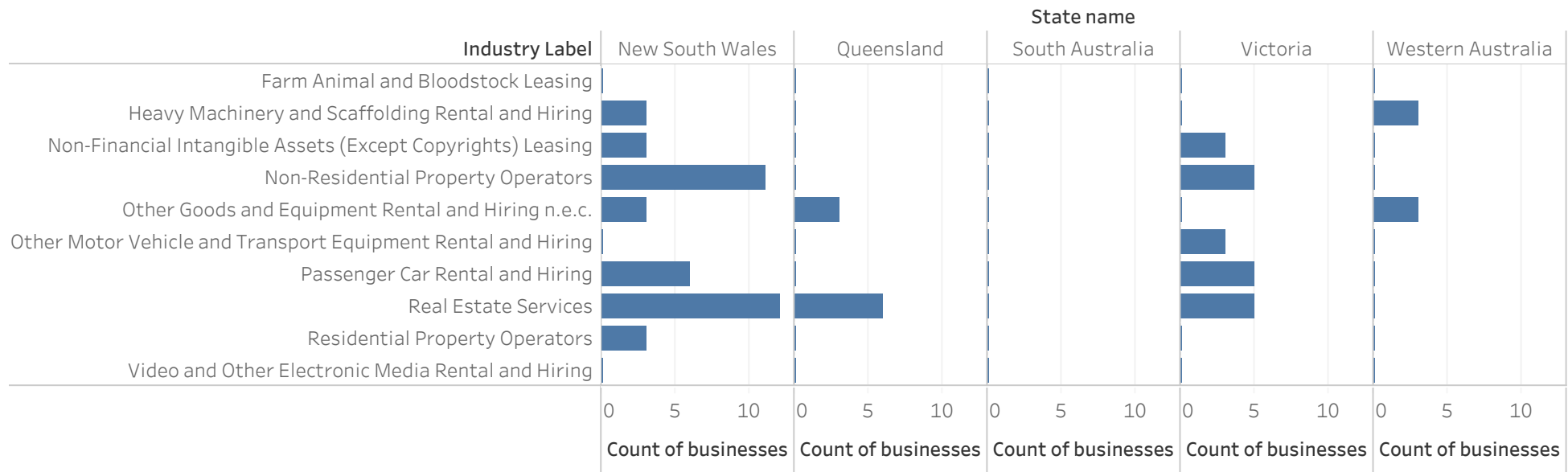
Sum of Count of businesses for each Industry Label broken down by State name. The data is filtered on Date Year, Size of business and Industry Division. The Date Year filter keeps 2017. The Size of business filter keeps 200+ Employees. The Industry Division filter keeps Retail Trade. The view is filtered on State name, which keeps New South Wales, Queensland, South Australia, Victoria and Western Australia.

Businesses with 200+ employees, 30 June 2017: Financial & Insurance Services



Sum of Count of businesses for each Industry Label broken down by State name. The data is filtered on Date Year, Size of business and Industry Division. The Date Year filter keeps 2017. The Size of business filter keeps 200+ Employees. The Industry Division filter keeps Financial and Insurance Services. The view is filtered on State name, which keeps New South Wales, Queensland, South Australia, Victoria and Western Australia.

Businesses with 200+ employees, 30 June 2017: Rental, Hiring & Real Estate Services



Sum of Count of businesses for each Industry Label broken down by State name. The data is filtered on Date Year, Size of business and Industry Division. The Date Year filter keeps 2017. The Size of business filter keeps 200+ Employees. The Industry Division filter keeps Rental, Hiring and Real Estate Services. The view is filtered on State name, which keeps New South Wales, Queensland, South Australia, Victoria and Western Australia.